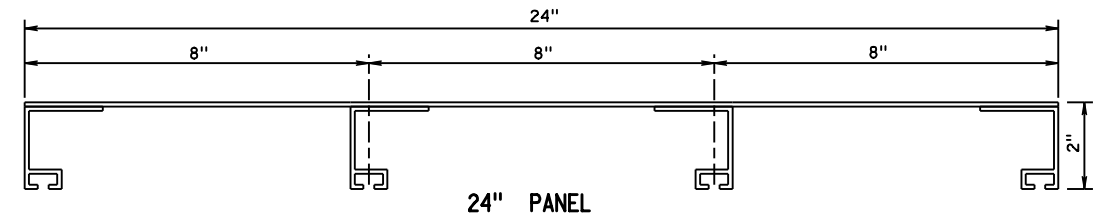
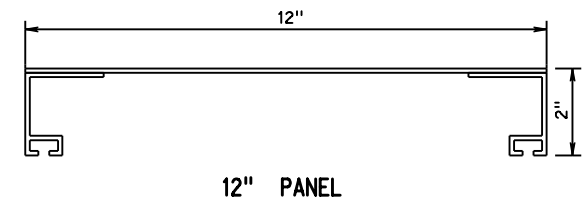
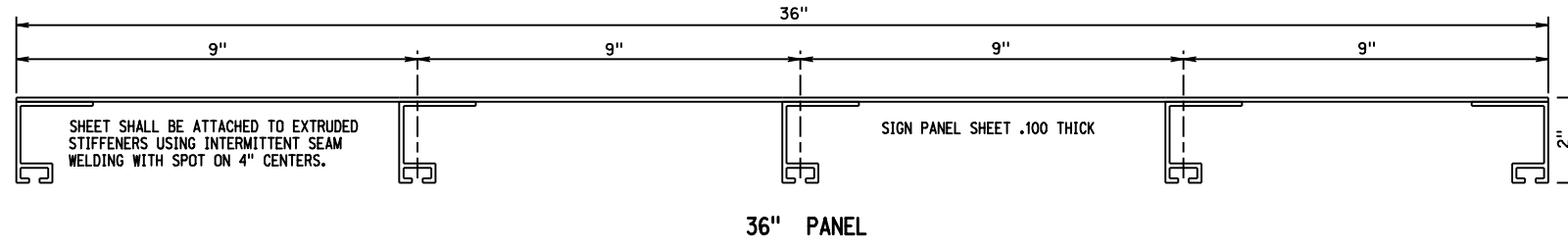
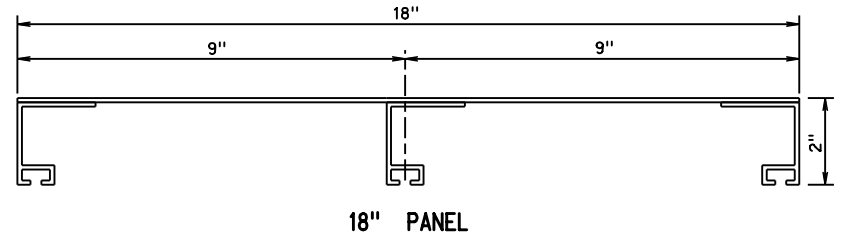


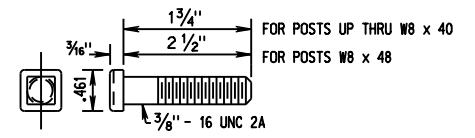
TRAFFIC ENGINEERING DIVISION



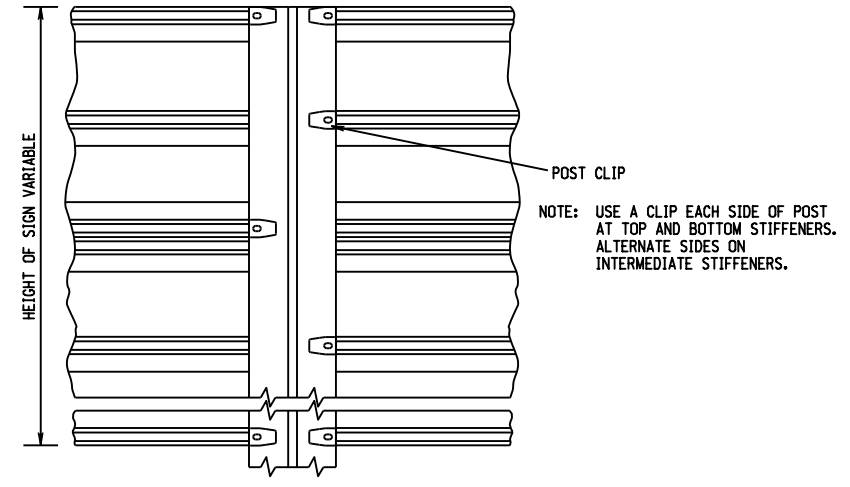
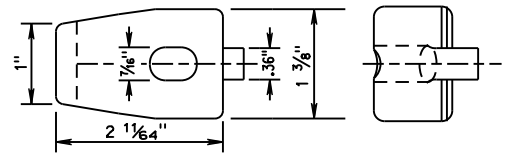
ALUMINUM SPECIFICATIONS:
FLAT SHEETS—ALLOY 3003-H18 OR 5052-H38 (ASTM B209)
EXTRUDED STIFFENERS—ALLOY 6063-T6 (ASTM B221)



EXTRUSHEET PANEL WIDTHS
(MOLDED EXTRUDED PANELS MAY BE SUBMITTED AS AN ALTERNATE TO EXTRUSHEET PANELS)



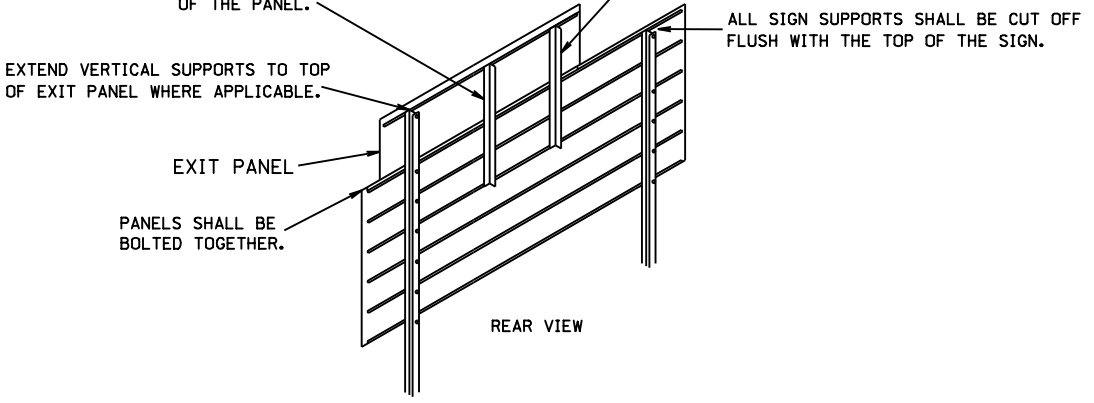
POST CLIP BOLT



TYPICAL MOUNTING FOR EXTRUSHEET SIGN PANEL

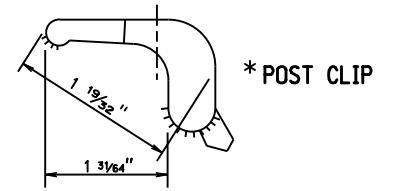
NOTE: USE ALUMINUM ANGLES FOR SUPPORTING EXIT PANEL WHEN VERTICAL SUPPORT SPACING IS GREATER THAN THE WIDTH OF THE PANEL.

● ALUMINUM \angle 1 1/2" x 1 1/2" x .188" x 4'
OVERHANG: MIN 12", MAX 15".
SPACE BETWEEN CENTERS: MIN 24", MAX 30".

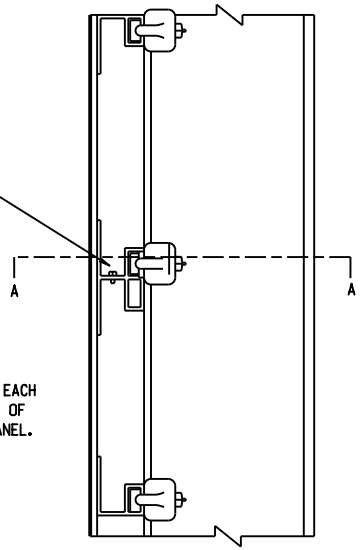


MOUNTING DETAILS FOR EXIT PANEL

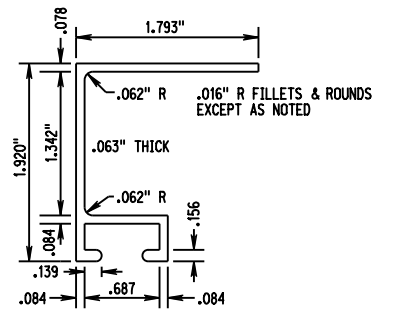
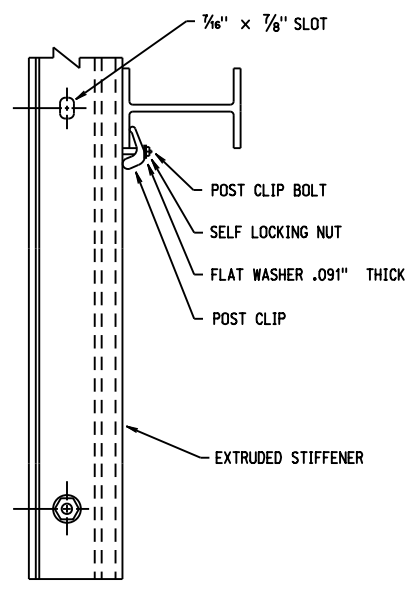
● AN ALUMINUM ANGLE, 1 1/2 INCH x 1 1/2 INCH x 0.188 INCH THICK FOR USE WITH EXTRUSHEET AND EXTRUDED SIGN BRACKETS ON WOOD POSTS, SHALL BE ALLOY 6061-T6 COMPLYING WITH ASTM B 308.



3/8" x 3/4" HEX, BOLT
3/8" HEX, NUT
FLAT WASHER 7/16" I.D.



ONE BOLT TO BE LOCATED AT EACH END OF PANEL AND A MINIMUM OF EVERY OTHER HOLE ACROSS PANEL.



EXTRUDED SIGN BRACKET

* POSTS CLIPS SHALL BE ALUMINUM ALLOY 356.0 CONFORMING TO ASTM B 108. POST CLIPS AND SIGN BRACKET BOLTS SHALL BE ALUMINUM ALLOY 2024-T4 CONFORMING TO ASTM B 211. LOCKNUTS FOR ALUMINUM BOLTS SHALL BE ALUMINUM ALLOY 2017-T4 CONFORMING TO ASTM B 211.



NEBRASKA DEPARTMENT OF TRANSPORTATION			
TRAFFIC ENGINEERING DIVISION			
SIGN DESIGN DETAILS			
DESIGNED	KSF	FABRICATION & MOUNTING DETAILS	
REVIEWED		TYPE "B" & "C" GUIDE SIGN PANELS	
APPROVED	DATE DRAWN	TRAFFIC ENGINEER	DATE

Computer: NDOTTRAFFIC8

Date: 12-NOV-2019 15:11

File: yalum.dgn